

EView/400i iSeries (AS/400) Discovery for Hewlett Packard Enterprise Software UCMDB

Extending HPE Universal Discovery's Topology Discovery to include the IBM iSeries (AS/400) environment



Highlights

- Builds on HPE Topology Discovery and extends its value to IBM iSeries (AS/400) Environments
- Seamless Integration with HPE Discovery and Dependency Mapping Software (DDMA), Content Pack 10 for HP UCMDB
- Auto-populate and maintain the UCMDB with all major iSeries (AS/400) CI and CI relationships
- Reduce or eliminate decision times and errors resulting in providing increased productivity with intelligent automation

EView/400i Discovery for iSeries (AS/400), developed by EView Technology, helps companies manage the tasks associated with Change, Incident, Problem and other IT Service Management disciplines for iSeries (AS/400)-based Configuration Items (CIs). Adding the EView/400i Discovery agent to the HPE Discovery and Dependency Mapping Advanced Edition (DDMA) for HP Universal Configuration Management Database (UCMDB) enables companies to view the iSeries (AS/400) CIs and their inter-relationships with distributed resources.

Through seamless integration with the HPE DDMA software, EView/400i Discovery eliminates the need for high-level UCMDB or iSeries (AS/400) expertise. This tight integration of HP and EView solutions provide a comprehensive, accurate, and complete view of your iSeries (AS/400) infrastructure.

EView/400i Discovery works with the HPE DDMA Content Pack 10 to provide the ability to visualize and understand the configuration items (CIs) and easily build an inventory of critical physical and logical entities along with their interrelationships.

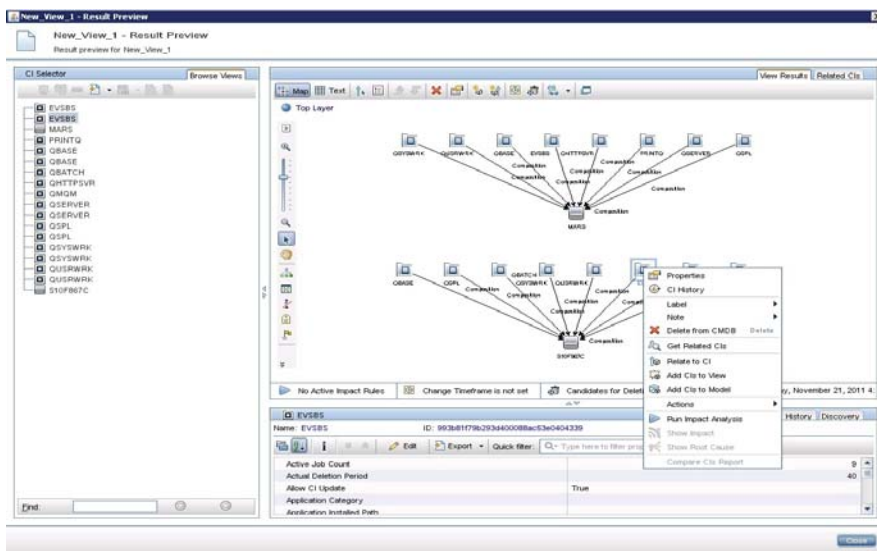
This information is then populated in the HPE UCMDB to create a detailed model of your IT environment for service modeling and service impact analysis.

HPE DDMA gives you the power to accurately discover what exists in your IT environment and map how it relates to other IT elements that support your business-critical services. This information is then stored in the HPE UCMDB and made available to other solutions in your IT environment so that everyone in IT can use the same service context.

Through this process, EView/400i Discovery collects information about iSeries (AS/400) CIs to populate the HPE UCMDB. The discovered information includes Resource and Object information. The highly flexible auto-discovery enables the HPE UCMDB to maintain the most precise and current CI data, providing the enterprise a single point of accuracy for the iSeries (AS/400) data.

EView/400i Discovery is intelligently designed for minimal footprint and negligible system resource consumption, the discovery process is flexible and supports the ability to set specific auto-discovery parameters, based on your unique business needs.

EView/400i Discovery's seamless integration with HPE DDMA provides organizations with an efficient and cost effective way to harness the power of the iSeries (AS/400) environment which is a crucial part of a comprehensive Enterprise IT strategy.



www.eview-tech.com
+1 919 878 5199
info@eview-tech.com

GET BUSINESS INSIGHTS THAT WERE PREVIOUSLY NOT POSSIBLE

What is Discovered

With EView/400i Discovery and HP DDMA, IT organizations can now discover specific CIs for inclusion into the HP UCMDB. The discovered information includes:

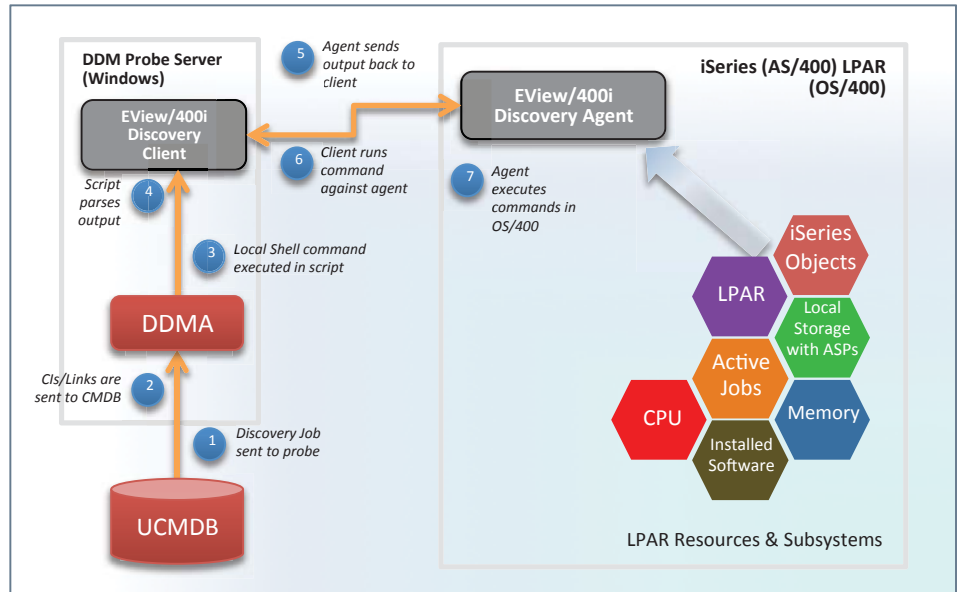
- Local Storage with ASPs
- Memory
- LPAR
- CPU
- Network Connectivity
- Installed Software
- Selected System Values
- Subsystems
- Active Jobs
- Job Queues
- Output Queues
- Libraries
- Program Objects

Features and Benefits

To help you diagnose and resolve problems more quickly, HP DDMA automatically and continuously discovers your IT environment and maps inter-dependencies from layer 2 to layer 7 of the OSI model and stores this information in the HP UCMDB. Benefits include:

- A complete end-to-end solution which includes the IBM iSeries (AS/400) environments.
- Minimizing finger-pointing within IT by creating a common view of the services that IT delivers and how the IT infrastructure supports these services.
- Accelerating incident and problem resolution through automated change tracking.
- Understanding the potential impact of changes prior to executing them through predictive change impact analysis.
- Identifying compliance issues.

Our technology partnerships



Key Capabilities

- Full, seamless integration with HP DDMA Content Pack 10, and later, for HP UCMDB.
- Capture change history each time a change to a CI is discovered
- Supports dynamic scheduling of discovery tasks to keep objects accurate and up to date.
- Faster application response time and improved data availability increase efficiency and streamline business problem detection and resolution.
- Accelerated access to data and comprehensive business intelligence further free up business and IT resources and provide quicker time to value.
- Real-time partitioning of information from the iSeries (AS/400) across the enterprise aligns the entire IT infrastructure – including partitions and subsystems.
- Deploy changes to the infrastructure - quickly inventories the hardware platform and all major software subsystems.
- Enables IT to resolve the most urgent incidents faster by impact modeling to support predictive change impact analysis, and prioritize incidents by business service critically.
- Improve productivity by automating day-to-day tasks.
- Regular usage of EView/400i Discovery can be used as an audit tool in order to reconcile new or changed CIs.
- Mitigate risk by ensuring that changes are made consistently with accuracy.

About EView Technology

EView Technology specializes in solutions that seamlessly integrate management, monitoring, and automated control of IBM mainframe and AS/400-iSeries environments into leading IT Management, Change Management (Discovery), and IT Operational Intelligence (BigData/Analytics) enterprise platforms. Customers select EView Technology for our expertise in providing comprehensive solutions which facilitate the consolidation of the IBM legacy server environments under a single view. The EView solutions take the complex and make it look easy.

Many of the world's top corporations, in over 35 countries, rely on EView as an integral part of their consolidated IT Operations infrastructure.

EView Technology is a Microsoft Cloud Solution Provider, HPE Gold Software Partner, HPE Enterprise Management Alliance Partner, Splunk Development Partner, and IBM Development Partner.