



# SAP Business Objects Monitoring

## Extend your monitoring capabilities

Extend your SAP monitoring capabilities into the SAP BusinessObjects Business Intelligence (BI) platform. The BusinessObjects Management Pack enables BI Platform Management through the power and flexibility of System Center Operations Manager.

This Business Objects MP was designed to increase the productivity of both the Microsoft System Center Operations Manager administrator and operator, providing the ability to quickly detect issues and take corrective action to avoid costly downtime.

## Technologies used

- SCOM 2012 SP1 & R2
- Management Server on Windows 2008 R2 or later (with at least .NET 2.0).
- BOBJ 4.0 or later

## The OZSoft BOBJ Management Pack for Microsoft System Center Operations Manager

### NiCE IT Management Solutions and OZSoft join forces to bring you ASE monitoring

IT staff generally face three significant challenges: managing a more and more complex environment, working efficiently with limited resources, and diagnosing and addressing problems in real-time. In today's interconnected IT environments, the underlying infrastructure is very complex and involves a wide range of servers, databases, and operating systems. They all resemble business critical functions.

### What the Business Objects MP does for you

#### Usage Scenario

The SAP BusinessObjects BI platform provides flexible systems management for an enterprise BI standard that allows administrators to confidently deploy and standardize their BI implementations on a proven, scalable, and adaptive service-oriented architecture. In today's world the BI platform became one of the mission critical assets that your organization relies upon for making the inform decisions. The underlying complexity of the technology make the operations of BI platforms in general and BusinessObjects in particular highly dependent on effective IT Operations, that in turn depend on thorough and proactive centralized monitoring.

The Business Objects Management Pack for SCOM is the integral part of IT Operations for organizations utilizing SCOM as its enterprise monitoring framework.

## Monitor your Business Objects BI according to your actual business needs

SAP Business Objects MP has many benefits and features to reduce the challenges that IT staff face

### Centralized Monitoring

You don't need to logon into BusinessObjects Central Management Console every time you need to check the status of your environment. All alerts, traces and metrics are available in SCOM with centralized thresholds and alerts management.

### Availability Monitoring

Hosts and Services availability is monitored via redundant methods ensure reliability of availability data and presented in SCOM hierarchical Health Explorer.

### Alert Management

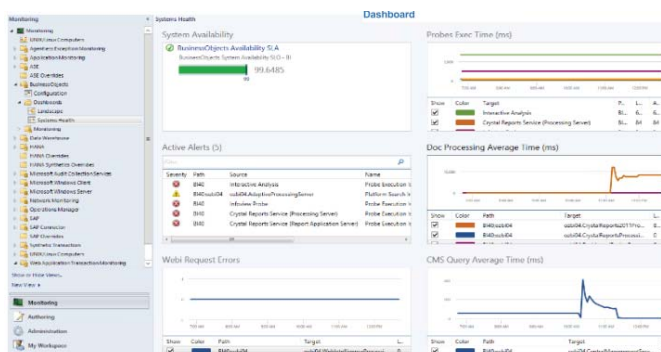
BOBJ Monitoring Events are forwarded to SCOM Alert. Optionally, Nodes' and Servers' Trace logs are constantly monitored for the new entries that posted as SCOM Alert giving the unprecedented awareness of what is really going on with your BI platform. With additional alert filtering and suppression the Management Pack allows for flexible alert management.

### Performance Monitoring

The OZSoft BOBJ Management Pack fully matches native CMC Monitoring covering all Server metrics reported by the platform. Additionally, the Management Pack integrates the monitoring and auto restart of important BI Windows Services. All collected metrics which can be charted in SCOM Performance views, Dashboards, or integrated with SCOM Data Warehouse for reporting.

### Synthetic Monitoring

BOBJ Management Pack fully integrates BUSINESS Objects Probes monitoring. Probes' execution time and status are collected as performance counters that can be charted in SCOM Performance views, Dashboards, integrated with SCOM Data Warehouse for reporting or set the threshold to trigger SCOM Alerts



### Heterogenous support

The Management Pack monitor BusinessObjects Platform remotely running on any infrastructure.

### Small footprint

OZSoft Management Pack is built with advanced Managed Modules minimizing SCOM performance overhead.

### Minimal prerequisites

SCOM 2012 SP1 & R2, with Management Server on Windows 2008 R2 or later (with minimal .NET 2.0). BOBJ 4.0 or later

### About OZsoft

OZSoft Consulting Corporation, the SAP Performance Management Specialist, has been providing SCOM and SAP integrated monitoring since 2009, as well as cloud-based SAP Systems Management as a Service powered by IT-Conductor

### About NiCE

NiCE IT Management Solutions is a company that has over 20 years of experience with Cross Platform Application Monitoring Solutions on UNIX, Linux, and Windows. NiCE has amassed this wealth of experience from collaboration and integration with our valued Business Partners including HP, Microsoft, Oracle, IBM and BlackBerry.

NiCE roots come from years of developing and perfecting Smart Plug-ins (SPIs) with our Business Partner, Hewlett Packard. With the introduction of Microsoft System Center Operations Manager, NiCE started developing Application Monitoring solutions for this platform as well.

As a Microsoft Gold Datacenter & Gold Application Development Partner, NiCE provides management packs for database and communication applications.

The NiCE mission has always been to provide the best monitoring solution for IT professionals worldwide. The highly skilled NiCE team services clients from around the globe spanning from SMBs to large corporations. NiCE IT Management Solutions is focused on ensuring that our clients are completely satisfied with our products because of the value they add to their business.

### Global operations

NiCE IT Management Solutions GmbH  
Liebigstrasse 9, 71229 Leonberg, Germany  
Phone +49 7152 939 82 0  
E-Mail: solutions@nice.de

### Americas operations

NiCE IT Management Solutions Corporation  
1162 Camino Vallecito, Lafayette, CA 94549, USA  
Toll-free Phone: +1 877 778 3730  
E-Mail: sales@nice.us.com



# Business Objects MP for Microsoft SCOM

### Other NiCE MPs

DB2 MP  
BlackBerry MP  
Domino MP  
PowerHA MP  
Oracle MP  
SAP MP  
SAP ASE MP  
SAP HANA MP  
Log File MP  
zLinux MP  
Veritas MP

### To learn more, visit

[www.nice.de](http://www.nice.de)  
[solutions@nice.de](mailto:solutions@nice.de)

